

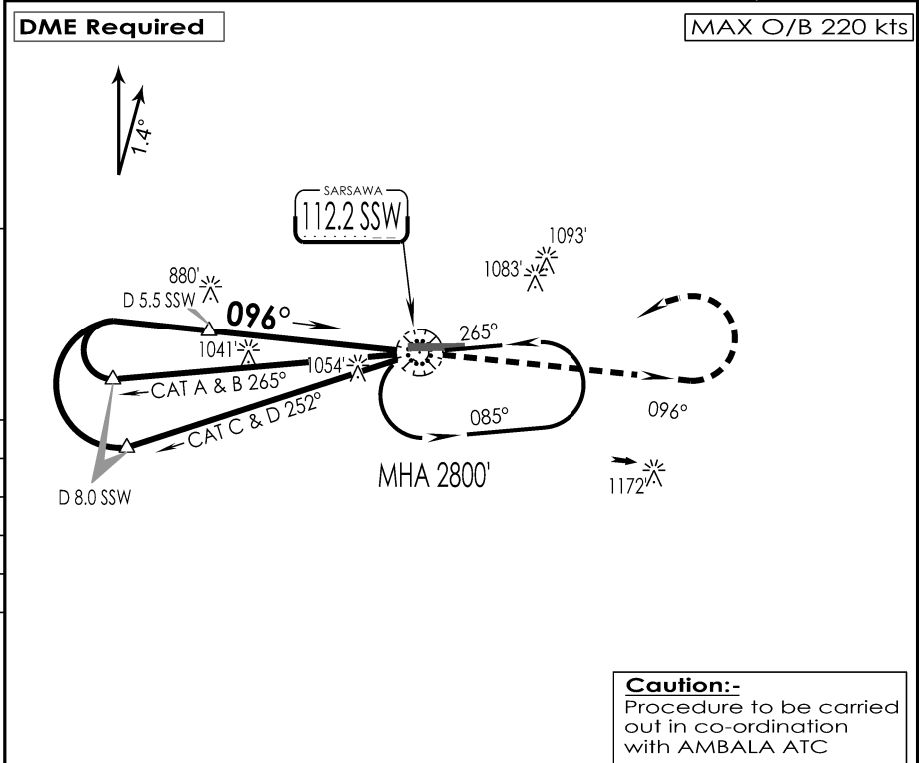
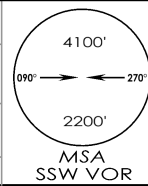
(2-3)

VISP
SARSAWA

IAF
18 NOV 25

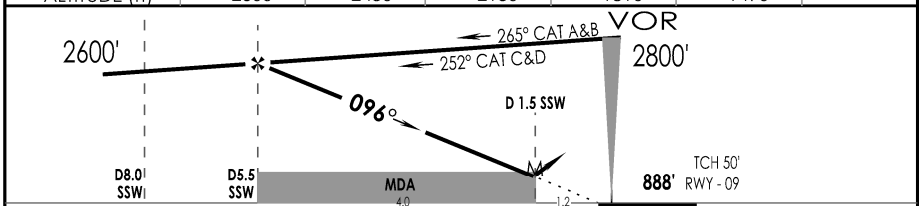
SARSAWA, INDIA
VOR Z RWY 09

SARSAWA Approach VC,UC		SARSAWA Tower 120.2 VC,UC		ATIS 112.2
VOR SSW 112.2	FINAL Apch Crs 096°	FAF D 5.5 SSW 2600'	MDA (H) 1330'(442')	Apt Elev 896' RWY 888'
MISSED APCH: Climb STRAIGHT AHEAD to 2000', then climbing turn LEFT to join VOR hold at 2800' or as directed by ATC.				
Alt Set: hPa	Rwy Elev: 32 hPa	Trans level: By ATC	Trans alt: 6000'	



Caution:-
Procedure to be carried out in co-ordination with AMBALA ATC

SSW DME ALTITUDE (ft)	5.5	5.0	4.0	3.0	2.0
	2600	2450	2130	1810	1490



GND SPEED KTS	80	100	120	140	160	180	↑ 2000'	2800' LT
DESCENT ANGLE 3°	425	531	637	743	849	955		

STRAIGHT-IN LANDING RWY 09			CIRCLE - TO - LAND			
CDFA						
MDA(H)			1330' (442')			
IALS		ALS OUT		Max kts	MDA (H)	VIS
A	RVR 1500m		A	1440'(552')	2800m	
B			B	1490'(594')	3200m	
C	RVR 1700m	RVR 2100m	C	1590'(694')	3600m	
D			D	1590'(694')	3600m	

CHANGES : TWR FREQ IPDC, DTE OF OPS (T & H)